

ANNUAL DTM SURVEY 2017

Published: November 2017

tracking and monitoring
displacement and needs of over

15m

individuals

in 49
countries

4,368
data collectors

262
professional
staff



DTM Annual Survey conducted from 5 July to 2 October 2017. Survey was applied to 56 countries with active DTM operations between July 2016 and June 2017. Responses were received and analyzed for 51 countries and not received for 5 countries. By the time of publishing, the total number of countries where DTM is active amounts to 49 and includes 36 surveyed and active at time of survey, 5 non respondent to survey and 8 new countries established after the end of the survey.

51 missions surveyed
36 with active DTM at time of survey

This survey covered DTM implementations in the second semester of 2016 and first semester of 2017.

PRODUCT REVIEW BY GLOBAL DTM SUPPORT

41 out of 51 surveyed countries reported to have used the global support team for product review sometimes, often or always. 10 countries reported that they rarely or never have.

countries have products reviewed by global DTM support team

80% **20%**

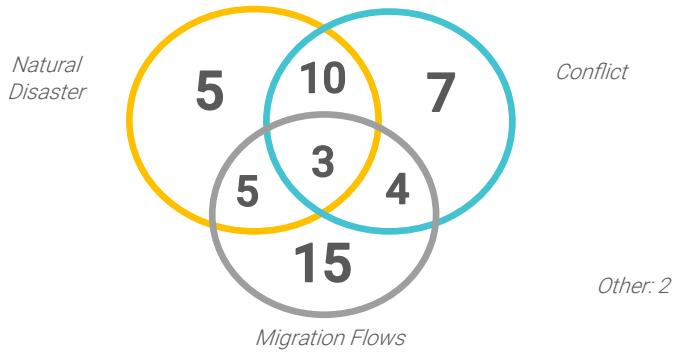
countries reported that they have not had products reviewed by global DTM support team



DTM interactive data website displacement.iom.int launched in November 2017 with displacement data from 30 DTM countries.

CONTEXT OF DISPLACEMENT – OPERATIONAL SETTINGS

DTM is used in different settings, which include internal displacement due to natural disaster and/or conflict, as well as mixed migration. During the survey period the use of DTM in mixed migration contexts has increased. The diagram below shows the number of countries in which DTM is being implemented by setting.



COUNTRIES AND IDP CASELOAD COVERAGE IN 2016

COUNTRY	INDIVIDUALS TRACKED BY DTM*	DISPLACEMENT IN COUNTRY **		PERCENTAGE OF COVERAGE BY DTM
		CONFLICT (TOTAL)	DISASTER (NEW)	
Burundi	65,600 indiv.	59,000 indiv.	6,600 indiv	100%
Cameroon	177,000 indiv.	177,000 indiv.		100%
Central African Republic	158,862 indiv.	412,000 indiv.		39%
Chad	9,769 indiv.	108,000 indiv.		9%
Ethiopia	499,435 indiv.	258,000 indiv.	347,000 indiv.	83%
Fiji	7,062 indiv.		76,000 indiv.	9%
Haiti	92,799 indiv.		180,000 indiv.	52%
Iraq	3,035,000 indiv.	3,035,000 indiv.		100%
Libya	304,000 indiv.	304,000 indiv.		100%
Mali	36,690 indiv.	37,000 indiv.	800 indiv.	97%
Mozambique	15,128 indiv.	15,000 indiv.	700 indiv.	96%
Nepal	15,595 indiv.		31,000 indiv.	50%
Nigeria	1,770,444 indiv.	1,955,000 indiv.	78,000 indiv.	87%
Philippines	18,770 indiv.	87,000 indiv.		22%
Somalia	353,800 indiv.	1,107,000 indiv.	70,000 indiv.	30%
South Sudan	438,963 indiv.	1,854,000 indiv.		24%
Sudan	220,000 indiv.	97,000 indiv.***	123,000 indiv	100%
Syrian Arab Republic	5,715,168 indiv.	6,326,000 indiv.		90%
Yemen	636,336 indiv.	1,974,000 indiv.	45,000 indiv.	32%

*Latest number available from DTM in 2016

**Estimates from IDMC GRID 2017

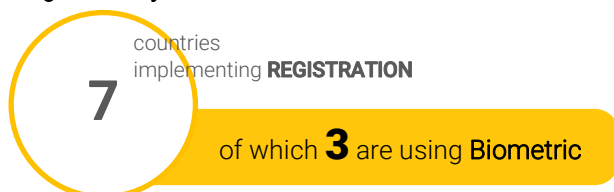
***For Sudan, new displacements in country

EXPECTED INCREASES IN CASELOAD COVERAGE

The following countries are undergoing an expansion of DTM operations, which will mean an increase in future percentage coverage:

- 1) Afghanistan: In 2017, DTM launched a new baseline mobility assessment in several provinces in the northeast of country.
- 2) DRC: DTM is expected to start a Baseline assessment in the Kasai province, which will yield its first reports by the end of 2017.

Registration System



ANNUAL DTM SURVEY 2017

DTM ROLL-OUT COORDINATION

In the majority of cases (26), IOM rolls out DTM through inter-agency mechanisms in coordination with clusters/sectors, government counterparts and/or OCHA. There are also settings, mostly those pertaining to flow monitoring, where IOM coordinates the roll-out of the DTM independently

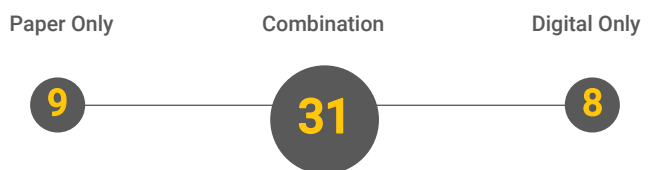
COORDINATION STRUCTURE:



TOOLS

The following section includes the whole sample of DTM countries surveyed, both active and inactive ones.

Paper versus Digital Platform for Data Collection*



*Information not available for two missions

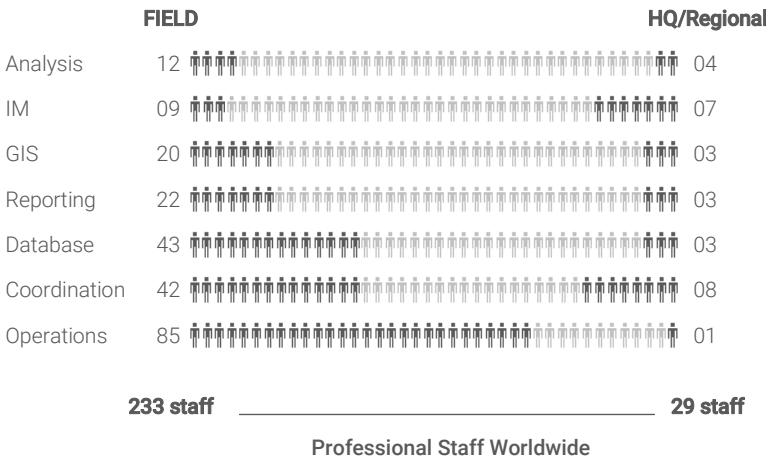
Digital Platform of Choice

Kobo has surpassed ODK as the most utilized tool for data entry in DTM exercises (multiple choice was possible for this question).



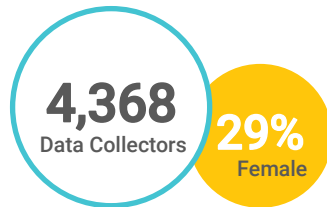
STAFFING

The majority of DTM professional staff in the field focus on operations and coordination activities. The third most common profile for DTM staff is database management profile.



262

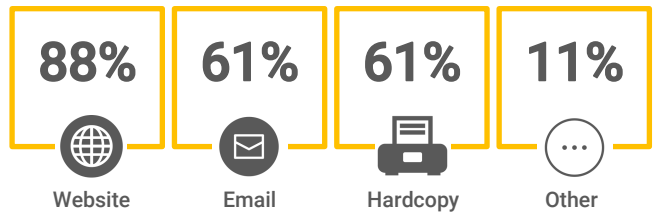
DTM Field Data Collectors consist of both IOM contracted staff and staff contracted through implementing partners. In some instances, DTM is also on data collection together with staff from national authority counterparts.



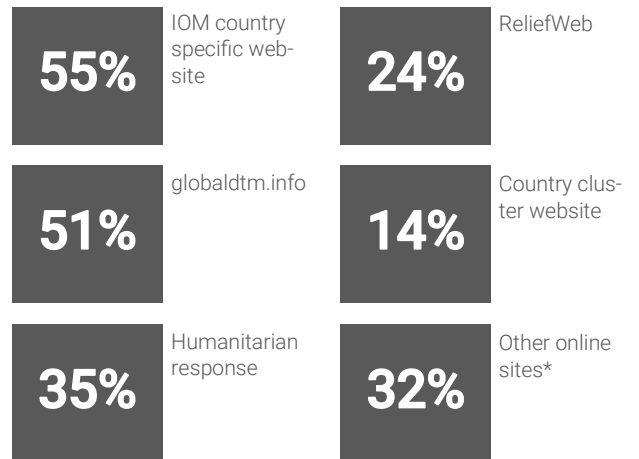
ANNUAL DTM SURVEY 2017

INFORMATION PRODUCTS

Medium and method of dissemination of information products by percentage of missions that report using it:



Websites used for dissemination of DTM products:

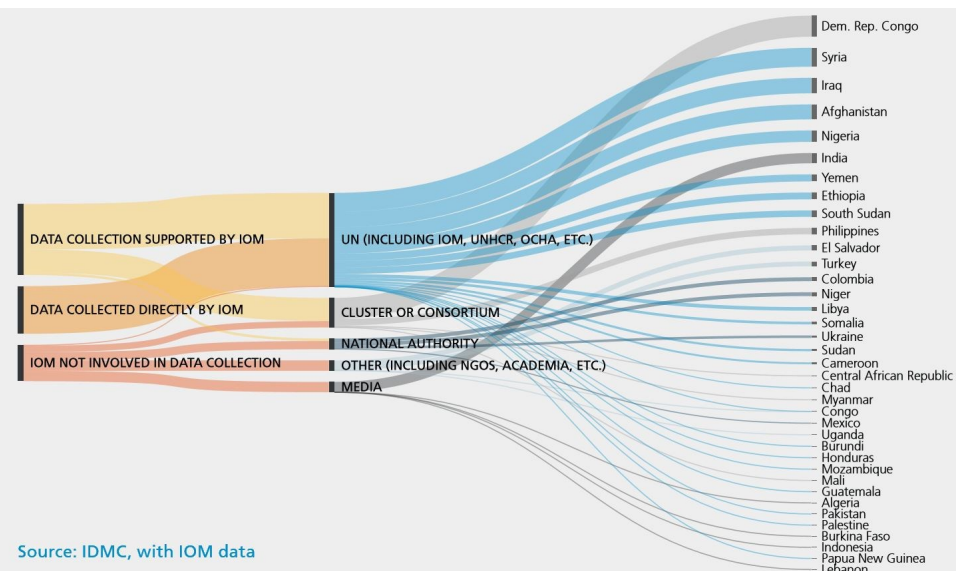


*public database, IOM geoportal, social media, country portal

SUMMARY OF PROJECTS AND DONORS

There were 49 active DTM projects at the time of the survey, with the **United States Agency for International Development/Office of US Foreign Disaster Assistance (USAID/OFDA)**, **European Civil Protection and Humanitarian Aid Operations (ECHO)** and **Department for International Development (DFID)** being the **3 largest sources of active funding for the DTM**. They were followed, in descending order, by the United States Bureau of Population, Refugees and Migration (PRM), EuropeAid, Central Emergency Response Fund (CERF), Germany, Japan, and Canada. Other donors include the Swiss Agency for Development and Cooperation, Swedish International Development Agency (SIDA), Ethiopia Humanitarian Fund, Common Humanitarian Fund, Europe Instrument contributing to Stability and Peace (IcSP), IOM internal funding mechanisms, Australia, USAID, United Nations High Commissioner for Refugees (UNHCR), Pakistan Humanitarian Fund and Norway.

DTM AS A SOURCE OF INTERNAL DISPLACEMENT DATA



The **Global Report on Internal Displacement (GRID) 2017**, produced by the **Internal Displacement Monitoring Centre (IDMC)** includes a section on the relevance of DTM as the tool used to collect much of the data analysed for the production of the report. The diagram on the left, extracted from the IDMC report, represents the involvement of DTM in country-level estimates. In the context of disasters, IDMC relies less on DTM and works more closely with national authorities.

Source: IDMC, Global Report on Internal Displacement GRID 2017